



# Modern Living

BY TAILOR MADE BY DESIGN



© 2012 TailorMade by Design for Benartex, LLC

Great way to show off beautiful fabrics, with a clean, modern touch!

Uses Michele D'Amore's *Manhattan Modern* collection.

FINISHED SIZE: 50" x 66"

# Benartex

Fabric for quilters. By quilters.

A BENARTEX PATTERN ♦ A BENARTEX PATTERN ♦ A BENARTEX PATTERN ♦ A BENARTEX PATTERN ♦ A BENARTEX PATTERN  
A BENARTEX PATTERN ♦ A BENARTEX PATTERN ♦ A BENARTEX PATTERN ♦ A BENARTEX PATTERN ♦ A BENARTEX PATTERN  
A BENARTEX PATTERN ♦ A BENARTEX PATTERN ♦ A BENARTEX PATTERN ♦ A BENARTEX PATTERN ♦ A BENARTEX PATTERN  
A BENARTEX PATTERN ♦ A BENARTEX PATTERN ♦ A BENARTEX PATTERN ♦ A BENARTEX PATTERN ♦ A BENARTEX PATTERN

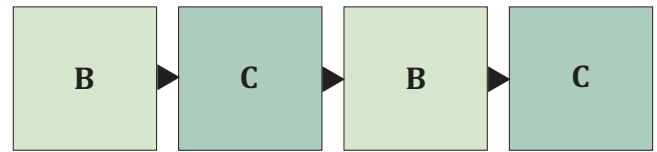


SAMPLE	KEY/SKU	QTY	CUT	CUT PIECES VIA WOF
	<b>A</b> Neon Stripe 2743-77 <i>Brown</i>	1/2 YD	(3) 4-1/2" x WOF strips*, subcut (2) 4-1/2" x 48-1/2" strips.	
	<b>B</b> Nightlife 2744-80 <i>Aqua</i>	3/4 YD	(4) 12-1/2" squares.	
	<b>C</b> Festival 2745-80 <i>Aqua</i>	3/4 YD	(4) 12-1/2" squares.	
	<b>D</b> Broadway 2749-77 <i>Brown</i>	3/8 YD	(3) 2-1/2" x WOF strips*, subcut (2) 2-1/2" x 48-1/2" strips.	
	<b>E</b> Flea Market 2742-07 <i>Cream</i>	1 YD	(3) 6-1/2" x WOF strips*, subcut (2) 6-1/2" x 48-1/2" strips. (1) 12-1/2" x 14-1/2" rectangle.	
	<b>F</b> Broadway 2749-84 <i>Teal</i>	1 YD	(2) 1-1/2" x 12-1/2" strips. (3) 2-1/2" x WOF strips*, subcut (2) 2-1/2" x 48-1/2" strips. (6) 1-1/2" x WOF strips*. (6) 2-1/4" x WOF strips; BINDING.	
	<b>G</b> Carousel 2739-45 <i>Green/Multi</i>	1/2 YD	(2) 12-1/2" x 16-1/2" rectangles.	

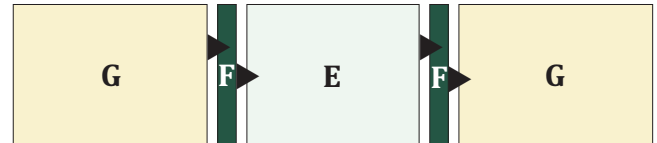
\*SEW STRIPS VIA SHORT ENDS, THEN SUBCUT AS INDICATED | WOF=WIDTH OF FABRIC

### BLOCK ASSEMBLY

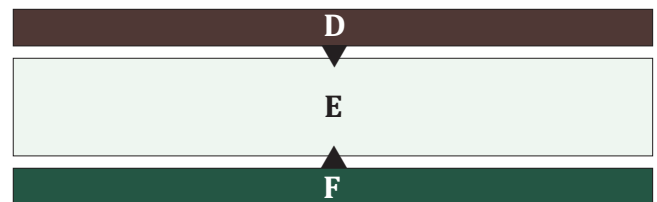
**1. BC UNIT:** Take (2) **B** and (2) **C** 12-1/2" squares and sew together as shown in diagram below. Trim to 12-1/2" x 48-1/2". Make 2 **BC** units. Set aside.



**2. EFG UNIT:** Take (1) **E** 12-1/2" x 14-1/2" rectangle, (2) **F** 1-1/2" x 12-1/2" strips and (2) **G** 12-1/2" x 16-1/2" rectangles and sew together as shown in diagram below. Trim to 12-1/2" x 48-1/2". Make 2 **EFG** units.



**3. DEF UNIT:** Sew (1) **E** 6-1/2" x 48-1/2" strip between (1) **D** and (1) **F** 2-1/2" x 48-1/2" strip. Trim to 10-1/2" x 48-1/2". Make 2 **DEF** units.



### QUILT ASSEMBLY

**4.** Using **BC**, **EFG**, **DEF** units and (2) **A** 4-1/2" x 48-1/2" strips, assemble quilt top as shown in **QUILT DIAGRAM**.

*NOTE PROPER ROTATION OF BC AND DEF UNITS.*

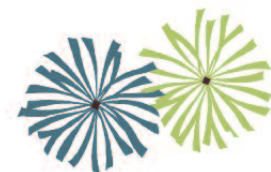
**BORDER ASSEMBLY** Measure width and length of quilt top to ensure **F** border cutting sizes. Below are our sizes.

**5.** Sew (1) **F** 1-1/2" x (64-1/2") to each side of quilt top. then sew (1) **F** 1-1/2" x (50-1/2") to top and to bottom of quilt top.

FINISHED SIZE: 50" x 66"

**FINISHING** Cut batting and backing 3" larger than top on all sides. Layer backing, batting and top together and baste or pin. When quilting is completed, trim excess batting and backing. Bind as usual.

*Note: If this Benartex pattern is included in a kit, any questions about the kit should be addressed to the vendor from whom you bought it.*



**BENARTEX, LLC**

132 WEST 36<sup>TH</sup> ST., 4<sup>TH</sup> FL

NEW YORK, NY 10018

212-840-3250 • WWW.BENARTEX.COM

### QUILT DIAGRAM

