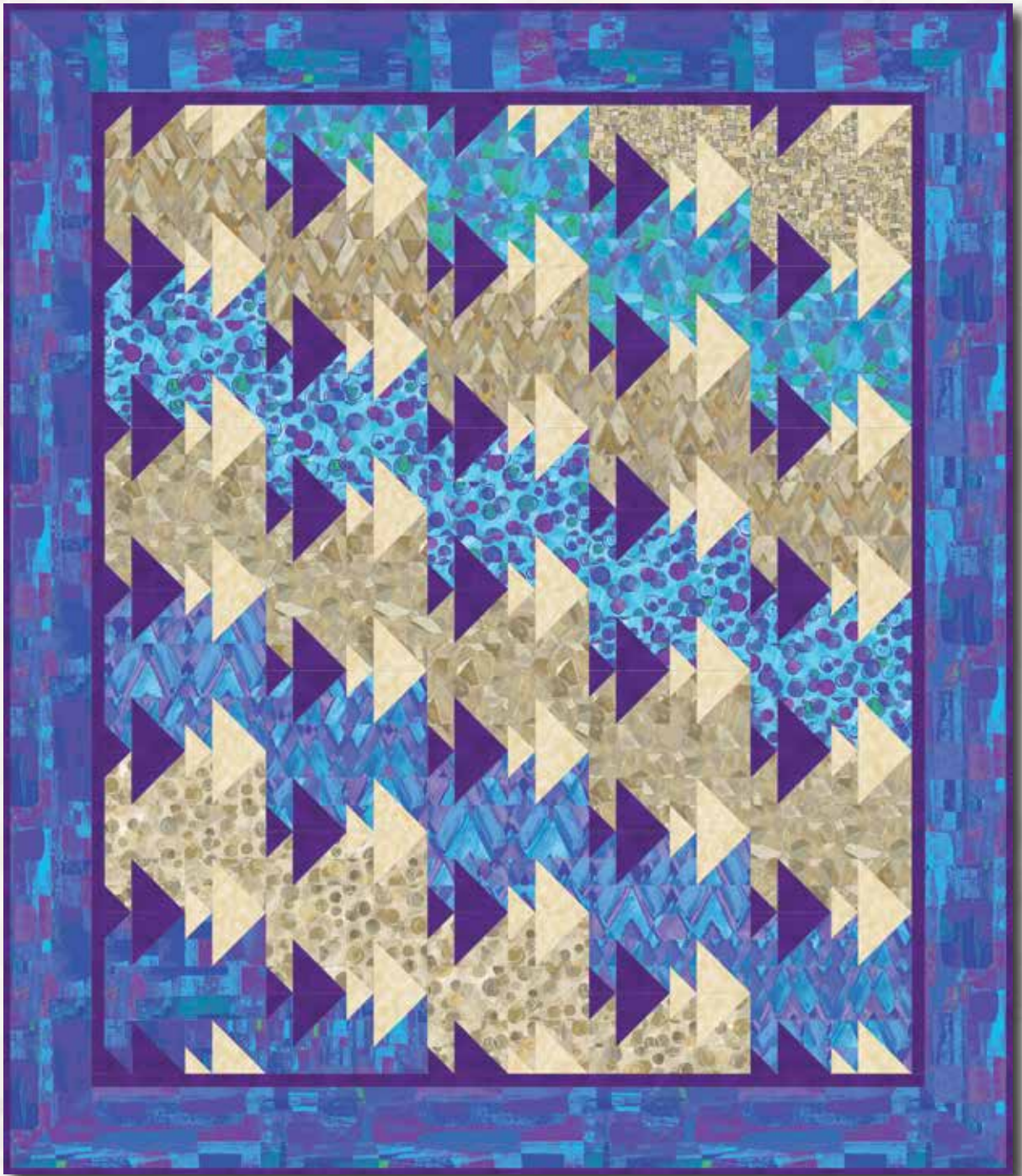


# MYKONOS



# MYKONOS

**Swimming Downstream** quilt by Toby Lischko  
featuring the *Mykonos* collection by P&B Textiles

Quilt Size: 74" x 86"

## YARDAGE

MYKO 950 B	1 <sup>7</sup> / <sub>8</sub> yards
MYKO 952 B	<sup>3</sup> / <sub>4</sub> yard
MYKO 952 NE	<sup>7</sup> / <sub>8</sub> yard
MYKO 954 B	<sup>7</sup> / <sub>8</sub> yard
MYKO 954 NE	<sup>7</sup> / <sub>8</sub> yard
MYKO 955 B	<sup>7</sup> / <sub>8</sub> yard
MYKO 955 NE	<sup>3</sup> / <sub>4</sub> yard
MYKO 956 NE	<sup>1</sup> / <sub>4</sub> yard
SUED 300 E	1 <sup>1</sup> / <sub>2</sub> yards
SUEB 300 C	2 <sup>3</sup> / <sub>8</sub> yards
BACKING	5 <sup>3</sup> / <sub>8</sub> yards of any MYKO fabric

## CUTTING

*All strips are cut across the width of the fabric.*

From **each** of MYKO 954 NE, MYKO 955 B, MYKO 952 NE, and MYKO 954 B, cut:

- (2) 12 <sup>1</sup>/<sub>2</sub>" x 42" strips; cut into (10) 4 <sup>1</sup>/<sub>2</sub>" x 12 <sup>1</sup>/<sub>2</sub>" rectangles **and** (10) 2 <sup>1</sup>/<sub>2</sub>" x 12 <sup>1</sup>/<sub>2</sub>" rectangles

From **each** of MYKO 955 NE and MYKO 952 B, cut:

- (3) 4 <sup>1</sup>/<sub>2</sub>" x 42" strips; cut into (6) 4 <sup>1</sup>/<sub>2</sub>" x 12 <sup>1</sup>/<sub>2</sub>" rectangles **and** (2) 4 <sup>1</sup>/<sub>2</sub>" x 6 <sup>1</sup>/<sub>2</sub>" rectangles
- (3) 2 <sup>1</sup>/<sub>2</sub>" x 42" strips; cut into (6) 2 <sup>1</sup>/<sub>2</sub>" x 12 <sup>1</sup>/<sub>2</sub>" rectangles **and** (2) 2 <sup>1</sup>/<sub>2</sub>" x 6 <sup>1</sup>/<sub>2</sub>" rectangles

From MYKO 950 B, cut:

- (1) 2 <sup>1</sup>/<sub>2</sub>" x 42" strip; cut into (2) 2 <sup>1</sup>/<sub>2</sub>" x 12 <sup>1</sup>/<sub>2</sub>" rectangles **and** (2) 2 <sup>1</sup>/<sub>2</sub>" x 6 <sup>1</sup>/<sub>2</sub>" rectangles
- (1) 4 <sup>1</sup>/<sub>2</sub>" x 42" strip; cut into (2) 4 <sup>1</sup>/<sub>2</sub>" x 12 <sup>1</sup>/<sub>2</sub>" rectangles **and** (2) 4 <sup>1</sup>/<sub>2</sub>" x 6 <sup>1</sup>/<sub>2</sub>" rectangles
- (8) 6 <sup>1</sup>/<sub>2</sub>" x 42" strips. Piece the strips and cut (4) 6 <sup>1</sup>/<sub>2</sub>" x 74 <sup>1</sup>/<sub>2</sub>" outer-border strips.

From MYKO 956 NE, cut:

- (1) 2 <sup>1</sup>/<sub>2</sub>" x 42" strip; cut into (2) 2 <sup>1</sup>/<sub>2</sub>" x 12 <sup>1</sup>/<sub>2</sub>" rectangles **and** (2) 2 <sup>1</sup>/<sub>2</sub>" x 6 <sup>1</sup>/<sub>2</sub>" rectangles
- (1) 4 <sup>1</sup>/<sub>2</sub>" x 42" strip; cut into (2) 4 <sup>1</sup>/<sub>2</sub>" x 12 <sup>1</sup>/<sub>2</sub>" rectangles **and** (2) 4 <sup>1</sup>/<sub>2</sub>" x 6 <sup>1</sup>/<sub>2</sub>" rectangles

From SUED 300 E, cut:

- (4) 2 <sup>1</sup>/<sub>2</sub>" x 42" strips; cut into (60) 2 <sup>1</sup>/<sub>2</sub>" squares
- (8) 4 <sup>1</sup>/<sub>2</sub>" x 42" strips; cut into (60) 4 <sup>1</sup>/<sub>2</sub>" squares

From SUEB 300 C, cut:

- (4) 2 <sup>1</sup>/<sub>2</sub>" x 42" strips; cut into (60) 2 <sup>1</sup>/<sub>2</sub>" squares
- (8) 4 <sup>1</sup>/<sub>2</sub>" x 42" strips; cut into (60) 4 <sup>1</sup>/<sub>2</sub>" squares
- (7) 1 <sup>1</sup>/<sub>2</sub>" x 42" strips. Piece the strips; cut (2) 1 <sup>1</sup>/<sub>2</sub>" x 72 <sup>1</sup>/<sub>2</sub>" inner-border strips and (2) 1 <sup>1</sup>/<sub>2</sub>" x 62 <sup>1</sup>/<sub>2</sub>" inner-border strips.
- (9) 2 <sup>1</sup>/<sub>4</sub>" x 42" binding strips

## MAKING THE BLOCKS

1. Draw a diagonal line from corner to corner on the wrong side of each 2 <sup>1</sup>/<sub>2</sub>" SUED 300 E square and each 2 <sup>1</sup>/<sub>2</sub>" SUEB 300 C square. Draw a diagonal line from corner to corner on the wrong side of each 4 <sup>1</sup>/<sub>2</sub>" SUED 300 E square and each 4 <sup>1</sup>/<sub>2</sub>" SUEB 300 C square.

2. Place marked 2 <sup>1</sup>/<sub>2</sub>" SUEB 300 C squares on both ends of a 2 <sup>1</sup>/<sub>2</sub>" x 12 <sup>1</sup>/<sub>2</sub>" MYKO 954 NE rectangle, right sides together. Sew along the line. Trim the corner fabric leaving a <sup>1</sup>/<sub>4</sub>" seam allowance. Press open the resulting triangles. Make a total of five units.

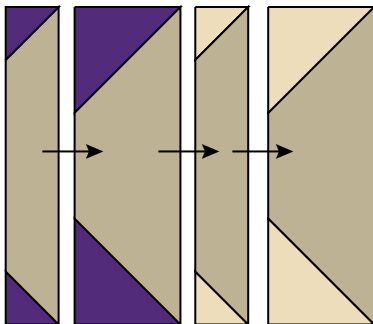


3. Repeat step 2, sewing marked 2 <sup>1</sup>/<sub>2</sub>" SUED 300 E squares to both ends of five 2 <sup>1</sup>/<sub>2</sub>" x 12 <sup>1</sup>/<sub>2</sub>" MYKO 954 NE rectangles.

4. Place marked 4 <sup>1</sup>/<sub>2</sub>" SUEB 300 C squares on both ends of a 4 <sup>1</sup>/<sub>2</sub>" x 12 <sup>1</sup>/<sub>2</sub>" MYKO 954 NE rectangle, right sides together. Sew along the line. Trim the corner fabric leaving a <sup>1</sup>/<sub>4</sub>" seam allowance. Press open the resulting triangles. Make a total of five units.

5. Repeat step 4, sewing marked 4 <sup>1</sup>/<sub>2</sub>" SUED 300 E squares to both ends of five 4 <sup>1</sup>/<sub>2</sub>" x 12 <sup>1</sup>/<sub>2</sub>" MYKO 954 NE rectangles.

6. Join one unit each from steps 2–5 as shown to make block 1. Press the seam allowances to the right. The block should measure  $12\frac{1}{2}$ " square. Make five of block 1.



7. Repeat steps 2–6, using marked  $2\frac{1}{2}$ " SUEB 300 C squares,  $2\frac{1}{2}$ " SUED 300 E squares,  $4\frac{1}{2}$ " SUEB 300 C squares,  $4\frac{1}{2}$ " SUED 300 E squares,  $2\frac{1}{2}$ " x  $12\frac{1}{2}$ " MYKO 955 B rectangles, and  $4\frac{1}{2}$ " x  $12\frac{1}{2}$ " MYKO 955 B rectangles to make five of block 2. Press the seam allowances to the left.

8. Repeat steps 2–6, using marked  $2\frac{1}{2}$ " SUEB 300 C squares,  $2\frac{1}{2}$ " SUED 300 E squares,  $4\frac{1}{2}$ " SUEB 300 C squares,  $4\frac{1}{2}$ " SUED 300 E squares,  $2\frac{1}{2}$ " x  $12\frac{1}{2}$ " MYKO 952 NE rectangles, and  $4\frac{1}{2}$ " x  $12\frac{1}{2}$ " MYKO 952 NE rectangles to make five of block 3. Press the seam allowances to the right.

9. Repeat steps 2–6, using marked  $2\frac{1}{2}$ " SUEB 300 C squares,  $2\frac{1}{2}$ " SUED 300 E squares,  $4\frac{1}{2}$ " SUEB 300 C squares,  $4\frac{1}{2}$ " SUED 300 E squares,  $2\frac{1}{2}$ " x  $12\frac{1}{2}$ " MYKO 954 B rectangles, and  $4\frac{1}{2}$ " x  $12\frac{1}{2}$ " MYKO 954 B rectangles to make five of block 4. Press the seam allowances to the left.

10. Repeat steps 2–6, using marked  $2\frac{1}{2}$ " SUEB 300 C squares,  $2\frac{1}{2}$ " SUED 300 E squares,  $4\frac{1}{2}$ " SUEB 300 C squares,  $4\frac{1}{2}$ " SUED 300 E squares,  $2\frac{1}{2}$ " x  $12\frac{1}{2}$ " MYKO 955 NE rectangles, and  $4\frac{1}{2}$ " x  $12\frac{1}{2}$ " MYKO 955 NE rectangles to make three of block 5. Press the seam allowances to the left.

11. Repeat steps 2–6, using marked  $2\frac{1}{2}$ " SUEB 300 C squares,  $2\frac{1}{2}$ " SUED 300 E squares,  $4\frac{1}{2}$ " SUEB 300 C squares,  $4\frac{1}{2}$ " SUED 300 E squares,  $2\frac{1}{2}$ " x  $12\frac{1}{2}$ " MYKO 950 B rectangles, and  $4\frac{1}{2}$ " x  $12\frac{1}{2}$ " MYKO 950 B rectangles to make one of block 6. Press the seam allowances to the right.

12. Repeat steps 2–6, using marked  $2\frac{1}{2}$ " SUEB 300 C squares,  $2\frac{1}{2}$ " SUED 300 E squares,  $4\frac{1}{2}$ " SUEB 300 C squares,  $4\frac{1}{2}$ " SUED 300 E squares,  $2\frac{1}{2}$ " x  $12\frac{1}{2}$ " MYKO 952 B rectangles, and  $4\frac{1}{2}$ " x  $12\frac{1}{2}$ " MYKO 952 B rectangles to make three of block 7. Press the seam allowances to the left.

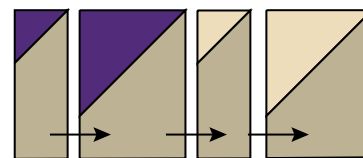
13. Repeat steps 2–6, using marked  $2\frac{1}{2}$ " SUEB 300 C squares,  $2\frac{1}{2}$ " SUED 300 E squares,  $4\frac{1}{2}$ " SUEB 300 C squares,  $4\frac{1}{2}$ " SUED 300 E squares,  $2\frac{1}{2}$ " x  $12\frac{1}{2}$ " MYKO 956 NE rectangles, and  $4\frac{1}{2}$ " x  $12\frac{1}{2}$ " MYKO 956 NE rectangles to make one of block 8. Press the seam allowances to the right.

14. Place a marked  $2\frac{1}{2}$ " SUEB 300 C square on the right end of a  $2\frac{1}{2}$ " x  $6\frac{1}{2}$ " MYKO 955 NE rectangle, right sides together. Sew along the line. Trim the corner fabric, leaving a  $\frac{1}{4}$ " seam allowance. Press open the resulting triangle.



15. Repeat step 14, sewing a marked  $2\frac{1}{2}$ " SUEB 300 C square on the right end of a  $2\frac{1}{2}$ " x  $6\frac{1}{2}$ " MYKO 955 NE rectangle to make one unit. In the same way, sew a marked  $4\frac{1}{2}$ " SUEB 300 C square on the right end of a  $4\frac{1}{2}$ " x  $6\frac{1}{2}$ " MYKO 955 NE rectangle. Then sew a marked  $4\frac{1}{2}$ " SUEB 300 C square on the right end of a  $4\frac{1}{2}$ " x  $6\frac{1}{2}$ " MYKO 955 NE rectangle. Make one of each unit.

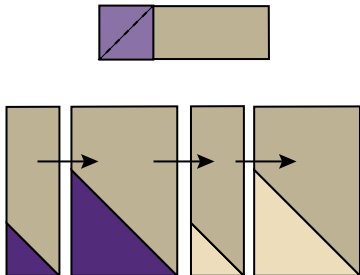
16. Join the units from steps 14 and 15 as shown to make one of block 5B. Press the seam allowances to the right. The block should measure  $12\frac{1}{2}$ " x  $6\frac{1}{2}$ ".



17. Repeat steps 14–16, using marked  $2\frac{1}{2}$ " SUEB 300 C squares,  $2\frac{1}{2}$ " SUED 300 E squares,  $4\frac{1}{2}$ " SUEB 300 C squares,  $4\frac{1}{2}$ " SUED 300 E squares,  $2\frac{1}{2}$ " x  $6\frac{1}{2}$ " MYKO 950 B rectangles, and  $4\frac{1}{2}$ " x  $6\frac{1}{2}$ " MYKO 950 B rectangles to make one of block 6B. Press the seam allowances to the left.



18. Repeat steps 14–16, sewing marked  $2\frac{1}{2}$ " SUEB 300 C squares,  $2\frac{1}{2}$ " SUEB 300 E squares,  $4\frac{1}{2}$ " SUEB 300 C squares, and  $4\frac{1}{2}$ " SUEB 300 E squares to the *left* end of the  $2\frac{1}{2}$ " x  $6\frac{1}{2}$ " MYKO 952 B rectangles and the  $4\frac{1}{2}$ " x  $6\frac{1}{2}$ " MYKO 952 B rectangles to make one of block 7A. Press the seam allowances to the left.



19. Repeat step 18, using marked  $2\frac{1}{2}$ " SUEB 300 C squares,  $2\frac{1}{2}$ " SUEB 300 E squares,  $4\frac{1}{2}$ " SUEB 300 C squares,  $4\frac{1}{2}$ " SUEB 300 E squares,  $2\frac{1}{2}$ " x  $6\frac{1}{2}$ " MYKO 956 NE rectangles, and  $4\frac{1}{2}$ " x  $6\frac{1}{2}$ " MYKO 956 NE rectangles to make one of block 8A. Press the seam allowances to the right.

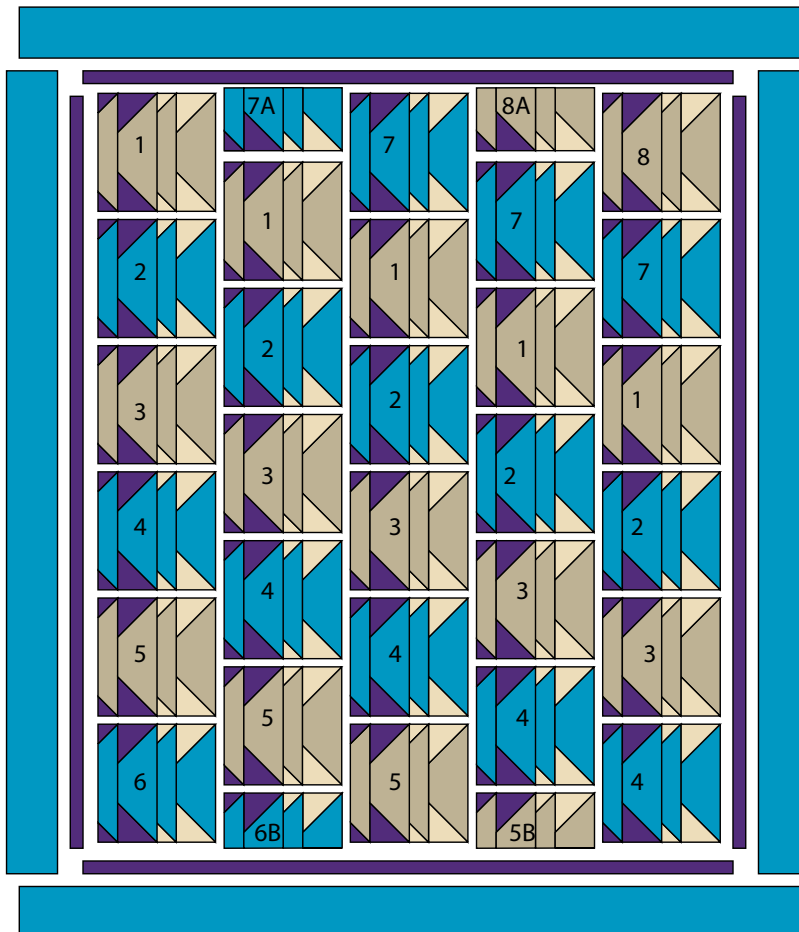
## ASSEMBLING THE QUILT

20. Lay out the blocks in five vertical rows as shown in the quilt layout diagram. Join the blocks into rows and then join the rows.

21. Using the SUEB 300 C inner-border strips, sew the  $72\frac{1}{2}$ "-long strips to the sides of the quilt top. Then sew the  $62\frac{1}{2}$ "-long strips to the top and bottom of the quilt top.

22. Sew MYKO 950 B outer-border strips to the sides, top, and bottom of the quilt top.

23. Layer the quilt top with batting and backing; baste. Quilt as desired. Using the SUEB 300 C  $2\frac{1}{4}$ "-wide binding strips, bind the edges to finish.



QUILT LAYOUT DIAGRAM

# MYKONOS

Fabric Collection by **P&B Textiles**



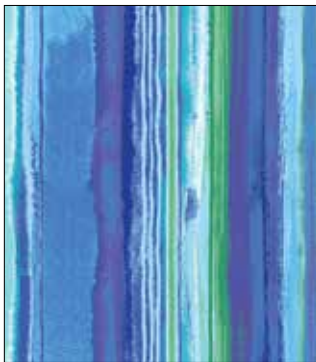
MYKO 950 B



MYKO 951 B



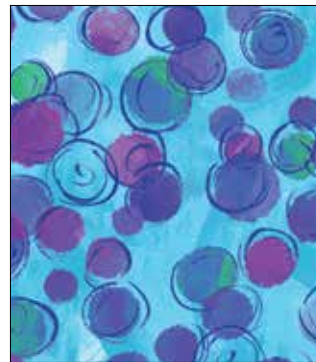
MYKO 952 B



MYKO 953 B



MYKO 954 B



MYKO 955 B



MYKO 956 B



MYKO 950 NE



MYKO 951 NE



MYKO 952 NE



MYKO 953 NE



MYKO 954 NE



MYKO 955 NE



MYKO 956 NE



**P&B Textiles** ♦ [www.pbtex.com](http://www.pbtex.com) ♦ 800-351-9087

45-47 Washington St., Pawtucket, RI 02860 ♦ 237 W. 35th St., 11th floor, New York, NY 10001

▲ 100% cotton ♦ Cold wash & dry ♦ 43" / 44" ♦ Colors may vary due to printing process

All fabrics shown at 25% scale except where indicated otherwise.