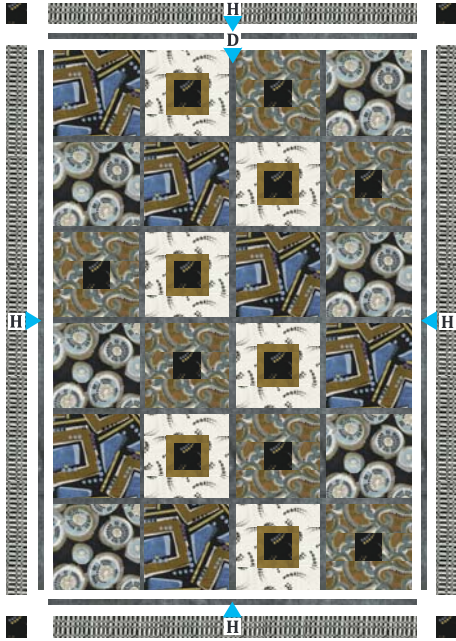


**BORDER ASSEMBLY:** Measure width and length of quilt top to ensure border cutting sizes. Below are our measurements.

5. Sew (1) **D** 1 1/2" x (77 1/2") border strip to each side of quilt top. Sew (1) **D** 1 1/2" x (53 1/2") border strip to the top and (1) to bottom of quilt top.

6. Sew (1) **H** 2 1/2" x (79 1/2") border strip to each side of quilt top. Sew (1) **G** 2 1/2" square to each side of **H** 2 1/2" x (53 1/2") border strip. (Make 2) Sew (1) to top and (1) to bottom of quilt top.

### QUILT DIAGRAM



**FINISHING :** Cut batting and backing 3" larger than top on all sides. Layer backing, batting and top together and baste or pin. When quilting is completed, trim excess batting and backing. Bind as usual.

*Note: If this Benartex pattern is included in a kit, any questions about the kit should be addressed to the vendor from whom you bought it.*

*Finished Quilt Size: 57" W x 83"L*

**CONTEMPO STUDIO, LLC • 132 WEST 36TH STREET, 4TH FLOOR  
NEW YORK, NY 10018 • T: 212-840-3250 • WWW.BENARTEX.COM**

# 24 Karat

Design By Janet Page Kessler









With hints of Metallic Gold combined with modern prints, 24 Karat looks like it belongs in a museum in an exquisite display. With this quilt, you're sure to feel like a million bucks!

Uses Contempo's "Precious Metals" Collection  
By Michele D'Amore  
Finished Size: 57" x 83"



CONTEMPO

THE QUILT SHOWN IS A DIGITAL REPRESENTATION.  
ACTUAL FABRIC REPEATS WILL VARY FROM DESIGN SHOWN.

SAMPLE	KEY/SKU	QTY	CUT
	<b>A</b> 3983M-84 Teal/Black Frames	3/4 YD	(2) 12 1/2" x WOF strips, subcut (6) 12 1/2" squares
	<b>B</b> 3985M-33 Gold/Teal Scroll	7/8 YD	(6) 4 1/2" x WOF strips, subcut (12) 4 1/2" x 12 1/2" strips (12) 4 1/2" squares
	<b>C</b> 3986M-12 Teal/Black Slices	3/4 YD	(2) 12 1/2" x WOF strips, subcut (6) 12 1/2" squares
	<b>D</b> 3987-11 Grey Texture	7/8 YD	(6) 1 1/2" x WOF strips, subcut (18) 1 1/2" x 12 1/2"; SASHING STRIPS (7) 1 1/2" x WOF strips*; BORDER (7) 1 1/2" x WOF strips*; SASHING ROW STRIPS
	<b>E</b> 3987-33 Gold Texture	1/4 YD	(4) 1 1/2" x WOF strips, subcut (12) 1 1/2" x 4 1/2" strips (12) 1 1/2" x 6 1/2" strips
	<b>F</b> 3988-11 White Comet	2/3 YD	(6) 3 1/2" x WOF strips (12) 3 1/2" x 12 1/2" strips (12) 3 1/2" x 6 1/2" strips
	<b>G</b> 3988-12 Black Comet	7/8 YD	(2) 4 1/2" x WOF strips (12) 4 1/2" squares (4) 2 1/2" squares (8) 2 1/4" x WOF strips *BINDING
	<b>H</b> 3989-12 Black Chain Links	5/8 YD	(8) 2 1/2" x WOF strips*; OUTER BORDER

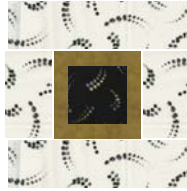
\* = SEW STRIPS VIA SHORT ENDS, THEN SUBCUT AS INDICATED | WOF = WIDTH OF FABRIC | HST = HALF SQUARE TRIANGLE

### BLOCK ASSEMBLY

This quilt is made up of 4 different blocks sewn together in rows with sashing strips between blocks and rows.

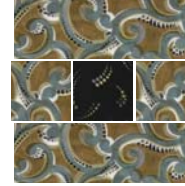
**1. BLOCK A** - Sew (1) **E** 1 1/2" x 4 1/2" strip to either side of (1) **G** 4 1/2" square, then sew (1) **E** 1 1/2" x 6 1/2" strip to top and bottom to create (1) **EG BLOCK**. Square to 6 1/2".

**2.** Sew (1) **F** 3 1/2" x 6 1/2" strip to either side of **EG BLOCK** then sew (1) **F** 3 1/2" x 12 1/2" strip to top and bottom of **EG BLOCK** to create **BLOCK A**. Square to 12 1/2" (Make 6)



**BLOCK A**  
(Make 6)

**3. BLOCK B:** Sew (1) **B** 4 1/2" square to either side of **G** 4 1/2" square, then sew (1) **B** 4 1/2" x 12 1/2" strip to top and bottom of square to create **BLOCK B**. Square to 12 1/2". (Make 6)



**BLOCK B**  
(Make 6)

### QUILT ASSEMBLY

**4.** Using **A** and **C** Squares, Blocks **A** and **B**, **D** 1 1/2" x 12 1/2" sashing strips and **D** 1 1/2" x 5 1 1/2" sashing row strips, sew together in rows as shown in diagram below. Sew rows and sashing strip rows together to complete quilt top.

